

RGP/RGPO Installation

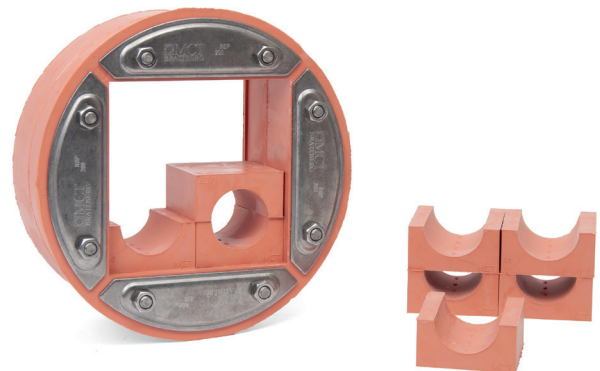
1. Measure the pipe/hole drilled to ensure the size is within the tolerance standards:

RGP type	Diameter opening
RGP 50	50-51
RGP 70	70-71
RGP 100	100-102
RGP 125	125-127
RGP 150	150-152
RGP 200	200-202
RGP 300	300-302

Pressuretight RGP cable transit

Before installation, all contact surfaces between the pipe and the RGP penetration must be carefully cleaned. Do not use lubricant on these surfaces. All blocks must be lubricated with MCT Brattberg lubricant. The penetration must not be subjected to pressure for 48 hours after installation. This is to distribute the pressure evenly over the entire passage, at temperatures below 20°C this will take more time.

2. Place the RGP frame in the opening. Lubricant should not be made into the hole from the outside of the frame.
3. Place the frame in the correct position in the hole. Check the frame is clean and pull the cables through. Place the largest cables at the bottom of the frame. Get to know the diameter of the cables and choose blocks.
4. Insert Blocks. The blocks can be recognized by: their width (A) and hole diameter (B). A block that is 30mm wide and has a hole diameter of 18mm is called 30-18*. This marking is indicated on the block.
5. Fill the frame
6. Tighten the nuts diagonally until there is 12-15mm thread is visible.



*Problems with the installation?
Maurice Welbie is happy to help you:
m.welbie@ttbv.com or
024-366 7472*